



ESMRMB

European Society for Magnetic Resonance in Medicine and Biology



ESMRMB 2011

28th Annual Scientific Meeting
October 6–8, Leipzig/DE

FREE
advance registration
for students and
resident members!

Call for Abstracts & Preliminary Programme

Abstract submission deadline	May 26, 2011
Early registration deadline	July 18, 2011

Gadovist® 1.0

Gadobutrol



Delivering Macrocylic Stability

- ◆ Macrocylic compound – class with highest stability¹
- ◆ Excellent safety and tolerability profile^{1, 2, 3}
- ◆ Highest T1-shortening⁴



Bayer HealthCare
Bayer Schering Pharma

EULI05.2009.0093 February 2010

1. Frenzel T, Lengsfeld P, Schirmer H, Hutter J, Weinmann HJ. Stability of gadolinium-based magnetic resonance imaging contrast agents in human serum at 37 degrees C. Invest Radiol. 2008; 43(12):817-828.
2. Tombach B, Bremer C, Kistner P, Kistner R, Schaefer RM, Geens V, Heindel W. Renal tolerance of a neutral gadolinium chelate (gadobutrol) in patients with chronic renal failure: results of a randomized study. Radiology. 2001; 218(3):651-657.
3. Balzer JO, Loewe C, Davis K, Goyen M, Leiner T, Meineny JF, Pockler-Schöniger C, Schulte-Altendorfer G, Tombach B, Vosshehrich R, Wegener R. Safety of contrast-enhanced MR angiography employing gadobutrol 1.0 M as contrast material. Eur Radiol. 2003; 13(9):2067-2074.
4. Rohrer M, Bauer H, Mintorovitch J, Requardt M, Weinmann HJ. Comparison of magnetic properties of MRI contrast media solutions at different magnetic field strengths. Investigative Radiology. 2005; 40(11):715-724.

Gadovist® 1.0, 1 mmol/ml solution for injection. Contains 604.77 mg gadobutrol (equiv. 1.0 mmol) as active ingredient. Excipients: calcium chloride, sodium hydroxide, hydrochloric acid, water for injections. This medicinal product is for diagnostic use only. Gadovist® 1.0 is indicated in adults, adolescents, and children aged 7 years and older for contrast enhancement in MRI and for contrast-enhanced CT. It is not intended for use in patients with severe renal impairment (GFR < 30 ml/min/1.73 m²).
Contraindications: Gadovist® 1.0 should not be used in patients with severe renal impairment (GFR < 30 ml/min/1.73 m²).
Special warnings and precautions for use: Gadovist® 1.0 should not be used in patients with uncorrected hyponatremia. In patients with severe cardiovascular disease Gadovist® 1.0 should only be administered after careful risk/benefit assessment because only limited data are available so far. Gadovist® 1.0 should be used with special care in patients with known congenital long QT syndrome or a family history of congenital long QT syndrome; with known previous arrhythmias after taking medicinal products that prolong cardiac repolarisation e.g. a Class III antiarrhythmic (e.g. amiodarone, sotalol). The possibility that Gadovist® 1.0 may cause torsade de pointes arrhythmias in an individual patient cannot be excluded (see SPC). Since contrast medium elimination is delayed in patients with severely impaired renal function, the benefits must be weighed very carefully against the risks in such cases. In particularly severe cases, it is advisable to remove Gadovist® 1.0 from the body by extracorporeal haemodialysis. For removal of the agent from the body, at least 3 dialysis sessions within 5 days of the injection should be performed. No impairment of renal functions has been observed during clinical trials performed on a limited number of patients. Data are too limited to exclude the possibility of renal toxicity or aggravation of renal impairment. There have been reports of nephrogenic systemic fibrosis (NSF) associated with use of some gadolinium-containing contrast agents in patients with severe renal impairment (GFR < 30 ml/min/1.73 m²). As there is a possibility that NSF may occur with Gadovist® 1.0, it should only be used in these patients after careful consideration. Haemodialysis shortly after Gadovist® 1.0 administration in patients currently receiving haemodialysis may be useful, but its potential to prevent NSF is unknown and should not be used as a preventative measure in other patient groups. Hypersensitivity reactions, as have been reported for other contrast media containing gadolinium, have also been observed after administration of Gadovist® 1.0. In patients with an allergic disposition the decision to use Gadovist® 1.0 must be made after particularly careful evaluation of the risk/benefit ratio. In rare cases delayed anaphylactoid reactions (after hours to days) have been observed. Like with other gadolinium-containing contrast agents special precaution is necessary in patients with a low threshold for seizures. **Undesirable effects:** Following adverse reactions have been observed in clinical trials. Uncommon (1/1,000 to <1/100): Headache, Dizziness, Disorientation, Nausea, Vomiting, Pruritus, Rash, Flushing, Hot flashes, Vasodilatation, Chest pain, Chest tightness, Shortness of breath, Stinging or burning at the injection site, Pain at the injection site, Warmth or pain at the injection site, Mild to moderate feelings of coldness, warmth or pain at the injection site have been uncommonly observed in association with the venous puncture or administration of Gadovist® 1.0. Rare (1/10,000 to <1/1,000): Anaphylactoid shock, Anaphylactoid reactions ranging to shock may occur. Delayed anaphylactoid reactions (after hours to days) have been observed rarely. Patients with an allergic disposition suffer more frequently than others from hypersensitivity reactions. **Date of revision of text:** September 2009 **Please note:** for current prescribing information refer to the package insert and/or contact your local Bayer Schering Pharma organisation. Bayer Schering Pharma AG, 13342 Berlin, Germany. Adverse reactions can be reported to GVCCaseProcessing@bayerhealthcare.com

Important Addresses

Congress Venue

Congress Center Leipzig
Messe-Allee 1
04356 Leipzig, Germany
www.ccl-leipzig.de

Organising Office

ESMRMB Office
Neutorgasse 9/2a
1010 Vienna, Austria
Phone: (+43) 1 535 13 06
Fax: (+43) 1 535 70 41
E-Mail: office@esmrmmb.org
Web: www.esmrmmb.org

Technical Exhibition Management

MAW - Medizinische Ausstellungsgesellschaft
Ms. Bettina Kreiner, Ms. Christine Mahatsek
Freyung 6
1010 Vienna, Austria
Phone: (+43) 1 536 63 35
Fax: (+43) 1 535 60 16
E-Mail: maw@media.co.at

Travel Partner

akd - congress & events
Elsterstraße 4
04109 Leipzig
Phone: (+49) 341 26 82 76-34 /-35
Fax: (+49) 341 26 82 76-36
E-Mail: info@akd-congress.de
Web: www.akd-events.de

Content

2	President's Address	1
3	A warm welcome	
4	Committees	
5	Young Investigator Award	
6-7	Call for Papers	
8	Scientific Exhibition – EPOS™ and Paper Posters	
9	Scientific Programme at a glance	
10	Highlights of ESMRMB 2011	
11	Teaching Programme	
12	Scientific Programme, Mini-Categorical Courses	
13	ENCITE Mini-Categorical Course	
14-15	Registration Information	
16	Support Programmes	
17	Free Advance Registration	
18-19	General Information on Leipzig	
20-21	Hotel Accommodation	
22	Map	
23	Tours	
24	Membership Information	

Deadlines

Abstract submission	May 26
Manuscript submission for Young Investigator Award	May 26
East-Meets-West Programme	July 8
Student Support Programme	July 8
Early registration	July 18
Deadline for free student and resident member registration	August 12
Hotel booking	August 12

Vienna, February 2011
Coordination: Denise Cosulich, Szilvia Csóka, Monika Hierath
ESMRMB Office, Vienna/AT
Layout: Barbara Biegl
Printed by: XXX

President's Address



2 Dear colleagues and friends,
dear MR enthusiasts,

On behalf of the ESMRMB Executive Board, it is my great pleasure to invite you to the 28th Annual Scientific Meeting of the European Society for Magnetic Resonance in Medicine and Biology. The meeting will take place in Leipzig, Germany, on October 6–8, 2011. Apart from joint meetings with our partner ISMRM and its predecessor in Berlin, this is the first ESMRMB meeting in Germany, the country with the largest MR community in Europe. Preparations for this meeting have been ongoing since 2008, with Prof. Dr. Christoph Segebarth as the Chair of the Scientific Programme Committee and Prof. Dr. Thomas Kahn as the Chair of the Local Organising Committee. Both of them have invested tremendous work and passion in the preparation of the meeting and we can all look forward to an exciting event with a strong scientific and educational programme, together with an interesting industrial exhibition. A highlight will be the Sir Peter Mansfield Opening Lecture by Nobel Laureate Prof. Richard Ernst. In addition, the very popular formats of the Hot Topic Debate and the Round Table Discussion will be continued with highly interesting topics and speakers.

The ESMRMB Meetings have grown steadily, with more than 1,000 delegates attending during the last few years. As a society, we are proud that these numbers include almost equal numbers of scientists focusing on basic and clinical research, giving the unique opportunity for truly interdisciplinary interaction. The ESMRMB will continue to encourage and support the participation of students and young scientists, who are the future not only of our society but also our science.

The city of Leipzig, in the heart of Europe, is an extremely attractive place to host a scientific meeting. With its rich heritage in culture, arts, and science, together with a beautiful historic city centre and vivid nightlife, you should plan to stay an additional day or two to catch all the science and sightseeing that Leipzig has to offer.

Once again, the ESMRMB is proud to invite you, as part of the worldwide MR Community, to its 28th Annual Scientific Meeting in Leipzig.

Mark the date in your calendar today! I look forward to welcoming many of you to Leipzig for an unforgettable event.



Prof. Oliver Speck
ESMRMB President



A warm welcome



Dear colleagues and friends,

It is my pleasure to invite you, on behalf of the Scientific Programme Committee, to participate in the 28th Annual Scientific Meeting of the ESMRMB.

Offerings should be most attractive to clinicians, basic scientists and MR engineers alike. The Sir Peter Mansfield Lecture will be provided by Professor Richard Ernst, recipient of the 1991 Nobel Prize in Chemistry. He will refresh our memories regarding scientists having played a key role during MRI's pioneering phase. Leading experts will provide Plenary Lectures, dedicated to gender differences, to non-proton MRI and to *in vivo* histology with MRI.

Further highlights of the Meeting will be the Round Table Discussion (on the insufficiencies of DTI in MR Tractography) and the Hot Topic Debate (on the routine clinical use of ASL in tissue perfusion imaging). The latter debate provides a unique opportunity to gain insight into controversial aspects related to a "hot" topic – while having a lot of fun!

Attendees will be presented a wide range of offerings meeting the educational demands of clinicians, basic scientists, technologists and engineers alike: Mini-Categorical courses (thirty talks!) and eight Teaching Sessions (24 talks!).

Following the previous success of the Joint EFOMP/ESMRMB Session, such a session will be held again. Focusing on "Hybrid Systems", it will be of major interest to MRI and Medical Physics communities alike!

The Meeting will further feature industry-funded Lunch Symposia and an extensive Technical Exhibition.

The Scientific Programme will count numerous parallel Scientific Sessions for oral presentation of the proffered communications. Three broad categories of communications will be considered: regular Scientific Session communications (clinical, preclinical and basic science studies), Software Exhibit communications (non-commercial software packages managing MR data) and Clinical Review Poster Session communications (NEW: case reports and small clinical series, clinical and pictorial reviews and illustrations of novel MR solutions to clinical challenges). Space and time slots will further be provided for viewing traditional (paper) and electronic ("EPOSTM") posters, and the Software Exhibit.

Finally, I want to encourage clinicians and scientists under 35 years of age to participate in the Young Investigator Award competition. Beyond considerable prize money, the prestigious award may present significant career benefits!

Prof. Dr. Christoph Segebarth
Chairperson of the Scientific Programme Committee



Dear colleagues,

The Local Organising Committee is very proud that the city of Leipzig has been selected to host the 28th Annual Scientific Meeting of the ESMRMB. Leipzig is looking back to a glorious past where the city has played an important role for the development of intellectual life and trading in Europe. In the more recent past, the peaceful demonstrations in autumn 1989 have been a cornerstone for the peaceful revolution that has ultimately led to German reunification.

The city of Leipzig has a rich heritage in music and the performing arts. Names like Johann Sebastian Bach and Felix Mendelssohn Bartholdy are inseparably linked to the city. The new Gewandhaus Concert Hall is home to the famous Gewandhaus Orchestra which goes back to 1743 and is known for its excellence in classical music performance. The Thomanerchor, the Boys Choir of St. Thomas Church, emerged over 800 years ago from church services organised by the Augustinian Canons. Its most famous choir-master from 1723 to 1750 was Bach himself. But also the Leipzig Opera holds a history of more than 300 years.

Leipzig is also linked to early developments in the field of nuclear magnetic resonance. After graduation, Felix Bloch continued his physics studies at the University of Leipzig and finished his doctoral thesis under the advice of Werner Heisenberg. Only last year, the University celebrated its 600th anniversary.

We are looking forward to seeing you in Leipzig.

Prof. Dr. Thomas Kahn
Chairman of the Local Organising Committee

Committees

4 Local Organising Committee

Chairperson

T. Kahn, Leipzig/DE

Members

H. Busse, Leipzig/DE
M. Gutberlet, Leipzig/DE
B. Hamm, Berlin/DE
M. Laniado, Dresden/DE
R. Turner, Leipzig/DE

Scientific Programme Committee

Chairperson

Ch. Segebarth, Grenoble/FR

Members

H. Bloem, Leiden/NL
G. Bongartz, Basel/CH
R. Gruetter, Lausanne/CH
M. Hajek, Prague/CZ
M.A. Hall-Craggs, London/UK
E. Moser, Vienna/AT
R. Muller, Mons/BE
J.P. Ranjeva, Marseille/FR
O. Speck, Magdeburg/DE
S. Sunaert, Leuven/BE
R. Turner, Leipzig/DE
B. Van Beers, Clichy/FR

Executive Board

President

Speck, Oliver, Magdeburg/DE

Past President

Berry, Isabelle, Toulouse/FR

President Elect

Larsson, Elna-Marie, Uppsala/SE

Secretary

Peter, Reimer, Karlsruhe/DE

Treasurer

Heerschap, Arend, Nijmegen/NL

Membership Officer

Schick, Fritz, Tübingen/DE

Education Officer

Moser, Ewald, Vienna/AT

Editor-in-Chief, MAGMA

Cozzone, Patrick J., Marseille/FR

Director, School of MRI

Steinbrich, Wolfgang, Basel/CH

Director, Lectures on MR

Scheffler, Klaus, Tübingen/DE

Director, Hands-On MRI

Van der Lugt, Aad, Rotterdam/NL

Chairperson of the SPC 2011

Segebarth, Christoph, Grenoble/FR

Chairperson of the SPC 2012

Sunaert, Stefan, Leuven/BE

Chairperson of the LOC 2011

Kahn, Thomas, Leipzig/DE



ESMRMB YOUNG INVESTIGATOR AWARD - WIN 1000

Boost your career and participate in the Young Investigator Award!

The competition is open to young clinicians and scientists at the undergraduate, graduate and postgraduate levels.

3rd prize
300

2nd prize
300

1st prize
1000

**Deadline for
submission:
May 26, 2011**

The prestigious ESMRMB - Young Investigator Award may present significant career benefits!

Applicants must fulfil the following criteria:

- Be under 35 years of age as per January 1, 2011
- Submit an abstract of a Scientific Session communication as a first author via the Electronic Abstract Submission System (open from Mid-January 2011 onwards under www.esmrmb.org)
- Check the Young Investigator Award box at the relevant submission step of the abstract
- Submit a full manuscript corresponding to the abstract to MAGMA ("Magn Reson Mater Phy", the official journal of the ESMRMB) before the **abstract submission deadline May 26, 2011**

The submission of a full manuscript is an absolute requirement for participation!

Submission of a manuscript to MAGMA implies that:

- The study has not been published before and is not in the process of being published anywhere else
- Its publication has been approved by all co-authors, if any
- Its publication has been approved – tacitly or explicitly – by the authorities of the institute where the study has been carried out
- The publisher will not be legally responsible should there be any claims for compensation

For detailed information on MAGMA journal, please log into: <http://www.springer.com/medicine/radiology/journal/10334>

To submit your paper(s) on Manuscript Central Site of MAGMA, please log into: <https://mc.manuscriptcentral.com/magma>

For any further questions, related to the manuscript submission, please contact Marguerite Izquierdo from the MAGMA Editorial Office at magma.office@medecine.univmrs.fr.

Young Investigator Award finalists will be notified during the abstract notification process in July 2011.

Call for Papers

- 6 The Scientific Programme Committee of the ESMRMB invites you to submit abstracts to the ESMRMB 2011 Meeting.

Abstract categories

Three broad categories of proffered communications will be considered:

- Scientific Session communications
- Clinical Review Poster Session communications (NEW!)
- Software Exhibit communications

Scientific Session communications refer to original studies dealing with clinical applications, with preclinical topics or with basic science.

Clinical Review Poster Session communications refer to case reports and small clinical series, to clinical and pictorial reviews, and to the illustration of novel MR solutions to clinical challenges.

Software Exhibit communications refer to non-commercial software packages managing MR data. Successfully introduced in 2009 under the name "Info-RESO" this exhibit is aimed to demonstrate computer applications in information management of magnetic resonance data. These software exhibits will be presented at a dedicated Exhibit Room. Typical examples are software packages developed for data quantification in MRS or in MRI, for parametric, connectivity or retinotopic mapping, for fibre tracking, for simulating RF heating, for image segmentation, for providing education in MRS or in MRI, or for providing computer-aided support to diagnosis.

Abstract formats

1. Scientific Session communications

Abstracts must be limited to 400 words and structured as follows:

- Purpose/Introduction
- Subjects and Methods
- Results
- Discussion/Conclusion
- References

2. Clinical Review Poster Session communications (NEW!)

Abstracts must be limited to 400 words and structured as follows:

- Introduction
- Cases
- Discussion
- References

3. Software Exhibit communications

Abstracts must be limited to 400 words and structured as follows:

- Purpose of the software
- Methods/Implementation/Hardware requirements
- Features illustrated at the exhibit

Presentation Formats

1. Scientific Session communications

During submission, authors can choose between the following presentation formats:

- Oral preferred
- Poster preferred – electronic (EPOS™) poster preferred
- Poster preferred – traditional (paper) poster preferred
- Poster only – electronic (EPOS™) poster preferred
- Poster only – traditional (paper) poster preferred

Oral Presentations

Presentations can only be made by using PC projection. Speakers must deliver their presentations in the following format to the "Preview Centre" onsite in Leipzig: PowerPoint for PC, on CDROM or data stick. Slide presentation as well as presentation from zip disk, laptop or Macintosh will not be possible!

2. Clinical Review Poster Session communications (NEW!)

A single presentation format will be provided for this category of proffered communications:

- Traditional (paper) poster only

3. Software Exhibit communications

Presenters are expected to bring their software – on their own computer – to the desk allocated to them in the Software Exhibit room and to present it to the ESMRMB attendees during the meeting. There will be specific timeslots allocated to each presentation during which desk attendance will be mandatory. The Scientific Programme Committee will judge all exhibits and award a Software Exhibit Award to the most outstanding exhibit.

In addition you are requested to display a paper poster explaining your software onsite at the Software Exhibit. You will also be requested to upload your paper poster into the EPOS™ database.

Submit your
abstracts until
May 26, 2011

Posters & Poster Awards

Electronic Poster Presentation – EPOS™

While the Leipzig Meeting will feature a traditional (paper) poster area, poster presentations will be based primarily on EPOS™, the Electronic Presentation Online System. In addition to the multi-media capabilities of this format, the key benefit of an EPOS™ upload of the posters is their visibility – EPOS™ presentations reach a very large audience during and after the Meeting. The EPOS™ system features easy onsite and online access to posters as well as a range of convenient features - including search tools and email forwarding. Finally, the EPOS™ system is most useful to the community if everyone participates. Therefore, the Scientific Programme Committee very strongly encourages using EPOS™ for presenting posters.

In the same spirit, the Scientific Programme Committee encourages authors of communications that are accepted for oral presentation to upload their presentation into the EPOS™ database. In case of “oral preferred” presentation format, the intention to do so in case of notification of oral presentation needs to be signaled during abstract submission (by ticking an appropriate box).

Posters will need to be uploaded into the EPOS™ database between early July and mid-August. Learn more on EPOS™ on page 8!

Paper Posters

Corresponding authors of traditional (paper) posters will in any case be requested to upload a PDF file corresponding to their poster into the EPOS™ database for archiving purposes.

There will be specific meet-the-author timeslots allocated to each paper poster during which attendance of the presenter will be mandatory.

Also paper posters qualify for the Poster Highlights Session organised during the Meeting.

Poster Awards

Both electronic and paper posters (of all abstract categories) will be reviewed by the Scientific Programme Committee and ten Poster Awards will eventually be granted (1 Magna Cum Laude, 2 Cum Laude and 7 Certificates of Merit) during the Closing Ceremony and Awards Session at the end of the Meeting.

For paper poster to qualify for the poster awards a PDF of the paper poster has to be uploaded in the EPOS™ database until mid-August.

Young Investigator Award

The Scientific Programme Committee encourages young clinicians and scientists to apply for the Young Investigator Award by checking the appropriate box at the relevant submission step. For further information, please refer to page 5.

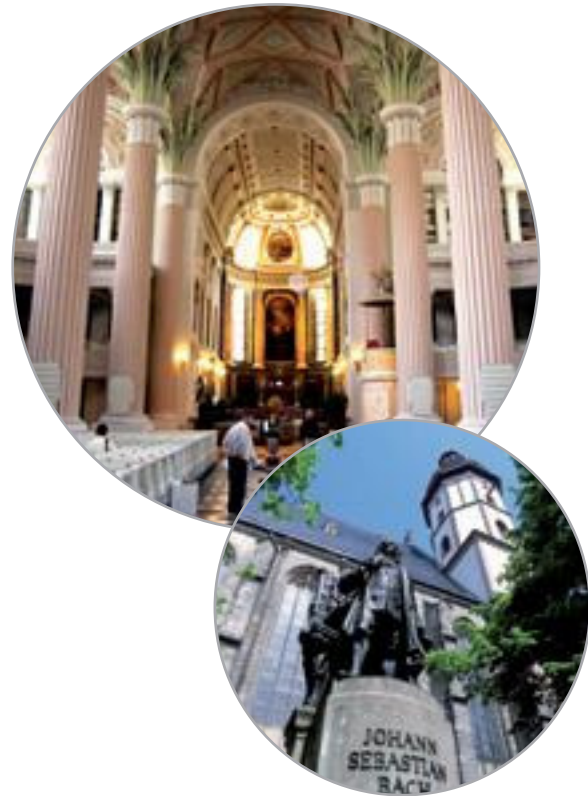
Deadline

All abstracts have to be submitted electronically via www.esmrb.org until **May 26, 2011**.

Please observe the deadline to ensure the evaluation of your submission. Late submissions and/or submissions by fax will not be considered.

Abstract withdrawal

If you decide to withdraw your abstract after the abstract deadline, you have to inform the ESMRMB Office in writing.



For more information, please visit www.esmrb.org.

Scientific Exhibition – EPOS™ and Paper Posters

8 EPOS™ Scientific Exhibition and traditional paper posters at ESMRMB 2011

ESMRMB 2011 will again stage an electronic scientific exhibition, using EPOS™, the Electronic Presentation Online System developed by the European Congress of Radiology (ECR).

What is EPOS™?

EPOS™ offers much greater flexibility than traditional scientific exhibits and enhanced opportunity for scientific communication: the ability to use moving images, to link to related websites, to search the entire database for specific topics, to email entire exhibits to personal email accounts and to access the scientific and educational exhibits from any computer with internet connection after the meeting.

Submission to EPOS™

As in previous years, all abstracts have to be submitted electronically via www.esmrm.org. The deadline for abstract submission is **May 26, 2011**.

Authors of abstracts accepted for electronic poster presentation at ESMRMB 2011 will receive their notification of acceptance early July. This notification will include their login data for EPOS™. Authors then have to upload their full electronic poster to **early July until mid-August 2011**.

While the submission of electronic posters is mandatory for all authors of accepted electronic poster presentations, authors of accepted oral presentations have the possibility to also upload their material to EPOS™, provided they checked the relevant box during abstract submission.

EPOS™ is very easy to use: An extensive online instruction and help system will guide you through the submission process on a step-by-step basis. Upon login, an overview page will display your accepted abstract(s) and the general poster structure:

Scientific Exhibit structured as Purpose - Methods and Materials - Results - Conclusions - References

Links to media files, such as small movies, images or image sequences, tables, flash animations, slide shows etc. can be set in each section of your exhibit.

Detailed instructions for EPOS™ submission will be available at www.esmrm.org. Posters already in the ECR EPOS™ database may not be re-submitted to ESMRMB.

EPOS™ at ESMRMB 2011

Around 30 PC workstations will be available in the scientific exhibition area for individual viewing of electronic exhibits. Trained staff will explain how to use the system and its advanced search functions. In addition, possibilities for group viewing of e-posters will be provided, allowing for interaction between poster presenters and delegates.

EPOS™ Online

When uploading the electronic material to EPOS™, authors permit ESMRMB to process and present their electronic presentation during the ESMRMB 2011 meeting via EPOS™. After the Congress, the posters will be displayed in the EPOS™ online database. Authors of paper posters will be asked to provide a PDF-file of their poster for archiving purposes.

The EPOS™ online database is available to everybody for free!

Paper Posters

From the feedback of author's request there will be an extended traditional paper poster area at the Leipzig meeting. During abstract submission, you will be asked whether you prefer electronic or traditional paper poster given that your work has been accepted as a poster by the Scientific Programme Committee.

In addition, there will be specific meet-the-author timeslots allocated to each paper poster during which attendance of the presenter will be mandatory.

Paper posters also qualify for oral presentation during Poster Highlights Sessions.



Scientific Programme at a glance

time	THURSDAY, OCTOBER 6, 2011				
8:00–9:00	Mini-Categorical Courses			ENCITE Mini-Categorical Course	
	Image Clustering and Segmentation Brain	Imaging more with less Parallel Imaging	Sports injuries Muscle tendon loading and stress	Obesity and Diabetes Fat and its consequences- the science and imaging of diabetes and obesity	Cellular labelling New contrast agents for molecular imaging
9:10–10:20	Opening Ceremony - Sir Peter Mansfield Lecture				
10:30–11:30	Plenary Session In vivo histology by MRI?				
12:00–12:30	Industry Symposia				
13:50–15:20	Teaching Session Basics of Magnetic Resonance Imaging			Scientific Sessions/Clinical Focus Sessions	
15:30–17:00	Teaching Session Advanced artifact reduction: how to recognize and eliminate artifacts			Poster Highlights Session	
17:30–19:00	Teaching Session Radio-Frequency coil design			Scientific Sessions/Clinical Focus Sessions	

9

TECHNICAL EXHIBITION
8:30–17:45

time	FRIDAY, OCTOBER 7, 2011				
8:00–9:00	Mini-Categorical Courses			ENCITE Mini-Categorical Course	
	Image Clustering and Segmentation Abdomen	Imaging more with less Compressed Sensing	Sports injuries Soccer injuries	Obesity and Diabetes Pancreas and liver	Cellular labelling Cell detection by MR imaging and spectroscopy
9:10–10:40	Plenary Session Gender differences in health				
11:10–12:40	Teaching Session Resting-state functional MRI: what you get from the resting brain		Scientific Sessions/ Clinical Focus Sessions	Joint ESMRMB/EFOMP Session Hybrid Systems	
12:30–13:00	Industry Symposia				
14:50–15:50	Young Investigator Award Finals				
16:00–17:30	Teaching Session MR-Imaging of joints			Scientific Sessions/Clinical Focus Sessions	
18:00–19:00	Hot Topic Debate Is ASL ready for routine clinical use in perfusion MRI?			Poster Highlights Session	

TECHNICAL EXHIBITION
8:30–18:15

time	SATURDAY, OCTOBER 8, 2011				
8:00–9:00	Mini-Categorical Courses			ENCITE Mini-Categorical Course	
	Image Clustering and Segmentation Heart	Imaging more with less Inverse Imaging	Sports injuries Upper extremity injuries in throwing athletes and in tennis players	Obesity and Diabetes Cardiac and peripheral consequences	Cellular labelling In vivo MRI and MRS in preclinical experiments
9:10–10:40	Plenary Session MR imaging beyond the proton				
10:50–12:20	Teaching Session Cardiac MRI - added value			Scientific Sessions/Clinical Focus Sessions	
12:30–14:00	Industry Symposia			Annual Business Meeting*	
14:10–15:40	Teaching Session Advanced Neuroimaging in clinical practice			Poster Highlights Session	
16:00–17:30	Teaching Session Contrast manipulation – mechanisms and applications			Scientific Sessions/Clinical Focus Sessions	
18:00–19:00	Roundtable Discussion MR tractography: Why DTI is not enough			Poster Highlights Session	
19:00–19:15	Award Ceremony				
19:15	Farewell Party				

TECHNICAL EXHIBITION
8:30–18:15

*Annual Business Meeting, Saturday 12:30–14:00. If less than half of the members of the ESMRMB are present, i.e. if there is no quorum, the Annual Business Meeting will start at 12:45.

Highlights of ESMRMB 2011

10

Opening Ceremony

Thursday, October 6, 09:10–10:20
Sir Peter Mansfield Lecture

**Reminiscences of MRI's pioneering phase:
Mansfield, Lauterbur and Others**
R. Ernst, CH

Plenary Sessions

Thursday, October 6, 10:30–11:30
In vivo histology by MRI?

**Myeloarchitecture - A guide to in vivo parcellation
of the human cerebral cortex**
S. Geyer, DE

Visualising cortical myelination patterns with MRI
N. Bock, CA

Friday, October 7, 09:10–10:40
Gender differences in health

Multiparametric imaging of the prostate
J. Fütterer, NL

Opportunities and challenges for breast MRI at 3T
F. Gilbert, UK

**Male/female differences in child and adolescent
brain development**
J. Giedd, USA

Saturday, October 8, 09:10–10:40
MR imaging beyond the proton

**Phosphorous MRS and X-nuclei MRI for cardiac
explorations**
F. Kober, FR

**Sodium imaging revived - Clinical and experimental
aspects**
L. Schad, DE

**Deciphering regulation of human metabolism by
13C NMR**
P. Morris, UK

Joint ESMRMB/EFOMP Session

For the second time a Joint Session between ESMRMB and EFOMP will be organised by the European Federation of Organisations for Medical Physics.

Friday, October 7, 11:10–12:40
Hybrid Systems

MRI-PET: Underlying physics and prospects
S. Ziegler, DE

MRI-Linac: Underlying physics and prospects
B.W. Raaymakers, NL

**MRI and focused ultrasound: Underlying physics,
current status and therapeutic applications**
R. Salomir, CH

Hot Topic Debate

Friday, October 7, 18:00–19:00
Is ASL ready for routine clinical use in perfusion MRI?

Moderator: M. van Osch, NL
Proponent: X. Golay, UK
Opponent: L. Ostergaard, DK

Roundtable Discussion

Saturday, October 8, 18:00–19:00
MR tractography: Why DTI is not enough

Moderator: D. Jones, UK

The anatomist's point of view
M. Thiebaut de Schotten, FR

The radiologist's point of view
M. Smits, NL

The physicist's point of view
G. Parker, UK

Teaching Sessions

Thursday, October 6

13:50–15:20

Basics of Magnetic Resonance Imaging

The ten most important basic principles of image formation
J. Bittoun, FR

The ten basic MR hardware concepts you must know as well as or better than your sales representative
F. Stahlberg, SE

The ten most important clinical indications for MRI of the central nervous system
E. Achten, BE

15:30–17:00

Advanced artifact reduction: how to recognize and eliminate artifacts

Artifacts and pitfalls in MRS
R. Kreis, CH

Artifacts and correction approaches in echo-planar imaging
M. Zaitsev, DE

Artifacts and pitfalls in Parallel Imaging
F. Breuer, DE

17:30–19:00

Radio-Frequency coil design

Basic RF concepts
M. Alecci, IT

RF simulations for RF coil design and compliance testing
A. Bitz, DE

Practical design of RF transmit and receiver coil arrays
D. Klomp, NL

Friday, October 7

11:10–12:40

Resting-state functional MRI: what you get from the resting brain

Data acquisition and processing
Ch. Windischberger, AT

Neurophysiology and the BOLD-effect
A. Villringer, DE

Brain models & the resting brain
B.B. Biswal, USA

16:00–17:30

MR-Imaging of joints

MRI of hip impingement
Ch.T. Mamisch, CH

What clinicians want to know from radiologists about cartilage: Pre- and post OP
S. Trattnig, AT

Tendons: From normal appearance to full tear
Ch. Glaser, USA

Saturday, October 8

10:50–12:20

Cardiac MRI - added value

Imaging cardiac disease in children: added value of MRI
A.M. Taylor, UK

Imaging cardiac disease in adults: added value of MRI
M. Gutberlet, DE

Valvular cardiac disease: added value of MRI
J. Bogaert, BE

14:10–15:40

Advanced Neuroimaging in clinical practice

Susceptibility weighted Imaging (SWI)
S. Trattnig, AT

Perfusion weighted Imaging: DSC, DCE or ASL?
M. Smits, NL

Diffusion weighted Imaging and DTI
S. Sunaert, BE

16:00–17:30

Contrast manipulation – mechanisms and applications

Basics of Contrast and Contrast Enhancement in Magnetic Resonance Imaging
P.A. Rinck, FR

Basic Contrast Agents in MRI
R. Muller, BE

Advanced Contrast Manipulation in MRI
J. Doornbos, NL

Scientific Programme, Mini-Categorical Courses

12

Mini-Categorical Courses

Thursday, October 6 through Saturday, October 8

08:00–09:00

IMAGE CLUSTERING AND SEGMENTATION

- Thursday** **Brain**
- **Clustering techniques applied to MRI and fMRI data of the human brain at 7 tesla**
G. Lohmann, DE
 - **Mapping complex brain networks using graph theory**
E. Bullmore, UK
- Friday** **Abdomen**
- **Image clustering and abdominal segmentation**
M. Noseworthy, CA
 - **Abdominal MRI for fat quantification**
V. Positano, IT
- Saturday** **Heart**
- **Assessment of cardiac volumes and function: Contribution of Bayesian segmentation approach**
M. Mazonakis, GR
 - **Automatic whole heart segmentation of cardiac MRI**
S. Ourselin, UK

IMAGING MORE WITH LESS

- Thursday** **Parallel Imaging**
- **Basics of parallel imaging**
J. Hajnal, UK
 - **Non-Cartesian parallel imaging**
F. Breuer, DE
- Friday** **Compressed Sensing**
- **Basics of compressed sensing**
S. Kozerke, CH
 - **k-t accelerated methods**
B. Jung, DE
- Saturday** **Inverse Imaging**
- **Spatial localisation by radio frequency**
P. Ullmann, DE
 - **Imaging with minimal gradient usage**
T. Grotz, DE

SPORTS INJURIES

- Thursday** **Muscle tendon loading and stress**
- **31P and 1H MRS of exercising muscle**
D. Bendahan, FR
 - **Tendon-muscle-bone complex**
Ph. Robinson, UK
- Friday** **Soccer injuries**
- **Ankle injuries**
M. Maas, NL
 - **Injuries of the posterior corners of the knee**
F. Vanhoenacker, BE
- Saturday** **Upper extremity injuries in throwing athletes and in tennis players**
- **Shoulder injuries in the throwing athlete**
S. Waldt, DE
 - **Upper extremity injuries in tennis players**
E. Llopis, ES

OBESITY AND DIABETES

- Thursday** **Fat and its consequences - the science and imaging of diabetes and obesity**
- **Metabolic and genetic disorders of diabetes & obesity**
M. Roden, DE
 - **Obesity as a disorder of the brain? Insights obtained with MRI**
A. Villringer, DE
- Friday** **Pancreas and liver**
- **Liver diseases and diabetes**
N. Schwenzer, DE
 - **MRI detection of transplanted pancreatic islets in patients**
D. Jiráková, CZ
- Saturday** **Cardiac and peripheral consequences**
- **Diabetes and body & peripheral consequences**
F. Schick, DE
 - **Diabetes and cardiac consequences**
H. Lamb, NL

ENCITE Mini-Categorical Course

ENCITE Mini-Categorical Course

**Thursday, October 6 through Saturday, October 8
08:00–09:00**

The European Network for Cell Imaging and Tracking Expertise (ENCITE) is very proud to have a joint collaboration for training with ESMRMB and presents its first ENCITE Mini-Categorical course on molecular imaging.

Within the scope of the ENCITE training work programme for 2011, Prof. Klaus Scheffler, Director of the 'Lectures on MR' and project partner of ENCITE representing the University of Basel/CH, has kindly offered this collaboration to ENCITE.

At the ESMRMB 2011 Annual Scientific Meeting in Leipzig/DE, ENCITE will carry out the Mini-Categorical course on molecular imaging on three consecutive days. Prof. Mathias Höhn, representing the Max-Planck-Institute in Cologne/DE within ENCITE, is in charge of arranging the scientific programme of the course.

CELLULAR LABELLING

- Thursday** **New contrast agents for molecular imaging**
- **New tools for whole-body optical imaging**
C. Löwik, NL
 - **MR contrast agents for molecular imaging**
K. Brindle, UK
- Friday** **Cell detection by MR imaging and spectroscopy**
- **MR sequences for negative and positive contrast measurements**
C. Faber, DE
 - **Detection of stem cells and biomaterials. In vitro and in vivo spectroscopy work of stem cells**
M. Modo, UK
- Saturday** **In vivo MRI and MRS in preclinical experiments**
- **In vivo MRS in rodent models**
U. Himmelreich, BE
 - **Cell tracking in a pre-clinical setting**
M. Bernsen, NL



The project ENCITE, co-ordinated by EIBIR and co-funded by the European Commission within the 7th Framework Programme, is a strong collaboration of 29 different research groups from 10 European countries and Israel.

The ambitious mission of the project is to develop and test new MR and optical imaging methods and biomarkers to draw a more comprehensive picture of cell fate and the reaction of the immune system. In the end, cell therapy shall be improved for the benefit of the European patient.

Details: www.encite.org

Registration Information

ESMRMB 2011 Registration Fees

	until July 18, 2011	after July 18, 2011	from Aug. 12, 2011 and on-site in Leipzig
Full Fee			
Member*	350	410	410
Non-Member	500	560	560
Students, Residents in training			
Member**	0	0	120
Non-Member***	220	260	260
Technologists			
Member*	80	120	120
Non-Member***	220	260	260

Early registration deadline: July 18, 2011

Please note that your registration can only be processed at the early registration fee, if your online registration and full payment are received by the ESMRMB Office by July 18, 2011.

Late registration: after July 18, 2011

Please note that registration fees transferred to the Congress account later than September 9, 2011 might not be considered as they probably will not be received in time. Only registrations accompanied by full payment can be considered complete.

* Reduced Congress fees for ESMRMB Members

Reduced Congress fees are available for members in good standing who have paid their 2011 membership fee. For membership information, please refer to page 24 or the ESMRMB website at www.esmrmb.org.

** Free advance registration for student and resident members of ESMRMB

As an encouragement for participation and submission of their work, ESMRMB invites its student and resident members to join the Congress free of charge!

In order to benefit from free registration, please consider the following steps:

1. You need to be a student/resident member of ESMRMB in good standing. This means that your 2011 ESMRMB student/membership fee has to be received by the ESMRMB Office no later than August 12, 2011. Student membership is limited to 6 years following the date of the diploma (bachelor, masters, medical degree). A copy of the diploma (bachelor, masters, medical degree) has to be uploaded during online application or sent to the ESMRMB Office no later than 10 days after membership application in order to validate your membership. Please note that this does not apply for PhD degrees. Application for student membership is available online at www.esmrmb.org.

ESMRMB offers two types of student/resident membership:

- 70** incl. print subscription and online access to the Society Journal
- 10** incl. online access to the Society Journal

2. You need to register for the ESMRMB 2011 Congress online at www.esmrmb.org no later than August 12, 2011. After that date, a student/resident fee will apply. If you have registered for the meeting and are unable to attend, please notify the Office in writing until August 12, 2011.

*** Registration as student, resident and technologist (non-member)

Technologists: Attestation of the institution/head of department required.

Students/residents: A copy of the diploma (bachelor, masters, medical degree) has to be uploaded during online application or sent to the ESMRMB Office. Please note that this does not apply for PhD degrees.

Accompanying persons

The accompanying person fee of 40 includes access to the Sir Peter Mansfield Lecture and to the welcome cocktail.

Terms of cancellation

Refund of registration fees less 30% administrative charge will be granted if the cancellation is notified to the ESMRMB Office in writing prior to July 18, 2011. Replacement participants will be treated as new registrations and are thus requested to make a new registration. After this date, no refund can be made for cancellations.

On-site registration hours

Wed, October 5:	15:00–18:00
Thu – Fri, October 6–7:	07:00–19:00
Sat, October 8:	07:00–15:00

ESMRMB Membership types and fees

Regular Member	140
Student member (<i>online and print journal</i>)	70
Student member (<i>online journal</i>)	10
Associate member	10
Free associate member	0

For more information please refer to page 24.

CME Accreditation

Previous ESMRMB meetings were accredited with a maximum of 18 credits of European external CME credits by EACCME / UEMS and with a maximum of 19.5 credits by EFOMP.

For ESMRMB 2011, accreditation has been requested from the European Accreditation Council for Continuing Medical Education and the European Union of Medical Specialists, EACCME/UEMS, as well as from the European Federation of Organisations for Medical Physics (EFOMP).

Please refer to the ESMRMB website at www.esmrmb.org for updates.

Registration
possible online at
www.esmrmb.org

Support Programmes

16

East-Meets-West Programme

The ESMRMB is pleased to announce the East-Meets-West Programme aiming to support the attendance of clinicians and scientists from East European countries at the 28th Annual Scientific Meeting in Leipzig, by waiving their Congress registration fee. Around 20 grants are available within this support programme. To be eligible for support, applicants must be citizens of an East European country. In addition, applicants must work in the field of MR in one of these countries:

Albania
Belarus
Bosnia and Herzegovina
Bulgaria
Croatia
Czech Republic
Hungary
Poland
Macedonia
Moldova
Montenegro
Romania
Russia
Serbia
Slovakia
Ukraine

Applicants are requested to submit:

- Application including their name and business address
- Curriculum vitae
- One-page essay describing their present work in MR and the reasons for attending the meeting

Applicants who are members of the Society and presenting a scientific contribution at the Congress as a first author will be preferred.

Student Support Programme

In addition to free registration for student/resident members, ESMRMB is happy to provide a number of travel support grants (€ 200.- each) to students and residents in training. To be eligible for support, applicants must be enrolled in a full-time undergraduate or graduate programme, or be residents in a clinical department and must not have obtained a doctorate or equivalent degree before **January 1, 2007**. Applicants who are members of the Society and presenting a scientific contribution at the Congress as a first author will be preferred.

Applicants are requested to submit:

- Application including their name and address
- Supervisor's letter of recommendation
- Confirmation of eligibility for a student grant, preferably by a University administrator
- Curriculum vitae

Applicants who are members of the Society and presenting a scientific contribution at the Congress as a first author will be preferred.



Applications are to be received no later than July 8, 2011.

All documents shall be sent to the ESMRMB Office marked as "EMW" or "SSP",
Neutorgasse 9/2a, 1010 Vienna, Austria.




ESMRMB

European Society for Magnetic Resonance in Medicine and Biology



Free advance
registration
for student & resident members



ESMRMB provides the ideal forum for young scientists to present their work, participate in scientific exchange and to enjoy an extensive educational programme.

As an encouragement for participation and submission of their work, ESMRMB invites its student and resident members to join the Congress free of charge!

In order to benefit from free registration, please consider the following steps:

1. You need to be a student/resident member of ESMRMB in good standing. This means that your 2011 ESMRMB student/membership fee has to be received by the ESMRMB Office no later than **August 12, 2011**. Student membership is limited to 6 years following the date of the diploma (bachelor, masters, medical degree). A copy of the diploma (bachelor, masters, medical degree) has to be uploaded during online application or sent to the ESMRMB Office no later than 10 days after membership application in order to validate your membership. Please note that this does not apply for PhD degrees. Application for student membership is available online at www.esmrmb.org.

ESMRMB offers two types of student/resident membership:

- 70 incl. print subscription and online access to the Society Journal
- 10 incl. online access to the Society Journal

2. You need to register for the ESMRMB 2011 Congress online at www.esmrmb.org no later than **August 12, 2011**. After that date, a student/resident fee will apply.

www.esmrmb.org

General Information on Leipzig

18

Facts

Population: ~ 519,000

Location: Central Germany, north-western Saxony
Town charter and market rights granted in around 1165
145km to Berlin, 100km to Dresden

Travel:

- by air: Leipzig/Halle Airport
- by road: A9 (Berlin–Munich), A14 (Dresden–Magdeburg), A38 (southern bypass)
- by rail: Intercity and other services (including night trains)

Time: Germany is 1 hour ahead of Greenwich Mean Time (GMT).

Climate: Leipzig is situated in the continentally influenced interior lowlands; at the beginning of October daytime temperatures are about 10° C.

Dialling code:

0341 within Germany; +49 341 from abroad

Experience the spirit of the city which for centuries has been a source of fascination for tradesmen, entrepreneurs, academics and artists alike. Leipzig sets itself apart with its unique interplay of tradition and innovation, dynamism and development, entrepreneurial and founding spirit. Experience a city which has contributed to European musical history like no other, with exceptional composers including Bach, Mendelssohn Bartholdy, Schumann and Wagner. The many cultural attractions that Leipzig has to offer, the stunning Wilhelminian architecture, numerous shopping arcades and the hospitality of the people of Leipzig provide the perfect setting for the event.

Leipzig is located in the east of Germany, in a low-lying area in the north-western part of Saxony by the rivers Elster, Pleisse and Parthe. Its average altitude above sea-level is 118m.

Leipzig currently has about 519,000 inhabitants. The city covers an area of 297.6km² and enjoys a generally relatively mild climate. The annual mean temperature is between 9 and 11 degrees Celsius.

Getting there and getting around



Leipzig/Halle International Airport links Leipzig directly with Paris, Vienna and Moscow, with the major international hubs at Frankfurt am Main, Munich and Dusseldorf and with the airports in Stuttgart and Cologne/Bonn. A lot of further destinations in mainland Spain and Portugal can be reached via this hub. The city centre is just 15 minutes away from Leipzig/Halle Airport by public transport or 20-30 minutes by taxi.



Leipzig is also on Deutsche Bahn's **high-speed rail network** and can be reached by direct train from Hamburg in three hours, from Frankfurt in three and a half hours and from Berlin in one hour. There are fast and convenient train connections to Leipzig from many major European cities. Rail travellers arrive right in the heart of the city.



Moreover, the city is located at the intersection of three major **motorways** (A9, A14 and A38).

Many of the hotels and attractions in the centre of Leipzig are only a few minutes' walk apart.



A well-structured network of **metropolitan trains, trams and buses** will take you to all parts of the city and the surrounding area at any time of the day or night.

Congress Venue



The Leipzig Trade Fair, one of the most modern trade fair and congress complexes in Europe, which is adjacent to the Congress Center Leipzig (CCL), offers the perfect backdrop for all kinds of events - from academic conferences and corporate functions right up to large-scale projects such as the Leipzig Book Fair. The new trade fair site is very close to the airport (10-15 min. by car or taxi, 8 minutes by public transportation). The city centre is only a 20 minutes' journey from the Congress Center on public transport.

Language

The official language is German.

The Congress language is English.



Culinary Culture



Leipzig is also a paradise for gourmets. For centuries, locals and their guests have enjoyed a host of culinary specialities ranging from the "Scheelchen Heeßen" (coffee, the Saxon national drink) and the vegetable dish "Leipziger Allerlei" to "Leipziger Lerche" cakes and "Leipziger Gose", a unique type of beer. Leipzig's traditional restaurants, modern bars and cosy cafés are great places to enjoy an excellent meal, a good chat, a cup of coffee, or simply to watch the world go by.



Shopping



In the early 20th century, Leipzig became the world's leading trade fair centre. The architecture in Leipzig's city centre continues to be dominated by old commercial and exhibition buildings, with most of the buildings reflecting the wealth and power of commerce in past eras. Leipzig is also famous for its beautiful arcades. Many of them have been elaborately restored in recent years and now radiate new splendour. Nowadays many small, exclusive shops alongside superlative restaurants and bars provide a unique atmosphere for shopping, browsing, or simply enjoying a stroll.

Thanks to its compact size, variety of functions and a superb blend of shopping, the arts and eating out, it is well on the way to becoming one of Germany's most attractive city centres.

In addition to being the gateway to the city centre, the recently restored Leipzig Central Station combines the atmosphere and charm of central Leipzig with the international air of Europe's biggest railway terminus. With over 140 shops and eateries, the shopping mall at Leipzig Central Station reflects the diversity found in the main shopping area with the added bonus of protection from the elements. Another attraction is that many of the shops are open until 10pm.

Sights



- **St. Thomas Church** (where Johann Sebastian Bach was employed for 27 years as organist and choirmaster)
- **St. Nicholas Church** (rose to fame in 1989 as the cradle of the Peaceful Revolution)
- **Gewandhaus Concert Hall**
- **Mädler Passage** (the city's most exclusive shopping arcade)
- **Auerbachs Keller** (this tavern was immortalised in Faust by Johann Wolfgang Goethe, the father of German literature)
- **café-cum-restaurant "Zum Arabischen Coffe Baum"** (one of Europe's oldest coffee houses)
- **Museum of Fine Arts** (owns one of the most prominent collections of art in central Germany)
- **Monument to the Battle of the Nations** (affords a magnificent view of all Leipzig's sights and parks and is the tallest monument in Germany)
- **Moritzbastei** (Europe's biggest student club)
- **Drallewatsch pub mile**
- a **boat tour along the Karl Heine Canal** through the quarter of Plagwitz with its industrial architecture from the beginning of the 20th century, nowadays housing loft apartments, art galleries and a very special atmosphere



Hotel Accommodation

Our official travel partner **akd congress & events** has secured a number of hotel rooms at attractive rates for delegates

The suggested way for hotel and tour reservation is to use the online platform at www.esmrmmb2011.org

20



ACHAT Comfort Hotel Messe-Leipzig***

1

Situated in the north of Leipzig, the ACHAT Comfort Hotel Messe-Leipzig offers 100 comfortable guest rooms, equipped with shower/WC, satellite TV, telephone, working desk with modem and WLAN access, double-glazed window, hairdryer. The hotel is close to the A14, giving quick and convenient access to the Leipziger Messe and Halle/Leipzig airport. The city centre is 7 km away. There are parking facilities in the underground garage.

Room Rates: SGL 94 / DBL 108 (incl. breakfast and all taxes)



A&O Hotel and Hostel** - exclusively reserved for students & residents

2

The A&O hotel and hostel is located in the historic post office building, vis-à-vis of the pretty Leipzig Central Station. The representative old building was completely refurbished and furnished up-to-date just recently. All rooms, whether single rooms or for several persons, have private shower and WC. There are internet terminals and WLAN available at the hotel. Credit cards (VISA and Master) will be accepted. Whether on foot or by bike (you may rent a bicycle in the hotel), the main attractions of Leipzig are not far away.

Room Rates: SGL 61 / DBL 78 (incl. breakfast and all taxes)



Art`otel Leipzig***

3

Only 500m far away from the main train station this modern art and design hotel is situated in the city centre's best location. In a few minutes walk to the train station you reach the historical old part of the town. The 40 guest rooms and studios are comfortably equipped and modern with bath, shower, TV, telephone, WLAN, aircondition, mini bar and safe. The hotel has a cosy breakfast restaurant, where you can enjoy a rich breakfast buffet in the morning. Additionally a small selection of snacks and beverages is offered.

Room Rates: SGL 89 / DBL 109 (incl. breakfast and all taxes)



Grand City Hotel Leipzig Zentrum***

4

The modern 3-star Grand City Hotel Leipzig is in a quiet location just a few minutes' walk from the heart of Leipzig's city centre. The hotel offers 72 comfortable rooms and 30 family apartments that are equipped with bath tub or shower and WC, hairdryer, cosmetic and shaving mirror, scale, television with satellite link, radio, direct dial telephone and refrigerator. There is ample parking in front of the hotel or in very close proximity.

Room Rates: SGL 91 / DBL 113 (incl. breakfast and all taxes)



Günnewig Hotel Vier Jahreszeiten Leipzig***

5

In the heart of Leipzig you find the Günnewig Hotel Vier Jahreszeiten. The 3 star hotel is conveniently located on the west side of the picturesque railway station with its grand shopping promenade and is an ideal starting point for your activities in Leipzig. The hotel offers 67 rooms, all with bath/shower, WC, partially with sound proof windows, sat and pay TV, telephone, WLAN in all rooms and on the ground floor, minibar. A limited number of parking spots are available at the hotel and a public car park is nearby.

Room Rates: SGL 100 / DBL 127 (incl. breakfast and all taxes)



Holiday Inn Garden Court Leipzig City Centre***

6

The hotel is located in the centre of Leipzig next to the Leipzig Central Station. It is offering 115 rooms with 3-star comfort with a self-adjustable air conditioning, safe, mini bar, telephone, TV. The televisions are also equipped with pay-TV channels. Each room can also be used as a workplace, free Wi-Fi internet is available at any time. Parking is possible in the car park near the hotel.

Room Rates: SGL 105 / DBL 115 (incl. breakfast and all taxes)



Hotel im Sachsenpark Leipzig****

7

The 4-star hotel welcomes you right in front of the Leipzig Fair and the CCL, in 5 minutes walking distance. The city centre is 15 minutes away. The 112 guest rooms are equipped with air conditioning and soundproof windows, all have a bathtub / shower, TV / Pay TV, minibar and trouser press. The bathroom includes hair & shower gel as standard equipment such as a hairdryer and a cosmetic mirror. The hotel offers 100 parking places free of charge.

Room Rates: SGL 120 / DBL 150 (incl. breakfast and all taxes)

Official Travel Partner:**akd & online booking website**

Elsterstraße 4, 04109 Leipzig

Phone: (+49) 341 26 82 76-34 /-35

Fax: (+49) 341 26 82 76-36

E-Mail: info@akd-congress.de

Web: www.esmrm2011.org

**NH Leipzig Messe********8**

Only a short walk from the Leipzig Trade Fair and the Congress Centre Leipzig, the 4-star NH Leipzig Messe serves as the gateway to the thrilling cultural highlights of the city that are, as well as the airport Halle/Leipzig, easily reachable by public transportation. The hotel's 308 stylish guest rooms are stocked with amenities that provide a bathrobe, a convenient work desk, Wi-Fi, flat-screen TV, minibar, coffee/tea facilities and many more thoughtful amenities. Guests who arrive by car are invited to take advantage of the 200 underground parking spaces of the hotel.

Room Rates: SGL 139 / DBL 155 (incl. breakfast and all taxes)**Precise Hotel Accento Leipzig********9**

The Precise Hotel Accento Leipzig is located between the international Halle/Leipzig airport and the new fairground area. The city centre is about 7 km away. The hotel bribes by its impudent and colourful design and ambience. All 115 light-filled guestrooms feature a bathroom with shower or bathtub, floor heating, toilet, hair dryer, telephone, fax, wireless internet access, satellite TV, pay TV, radio, desk and a mini bar.

Room Rates: SGL 100 / DBL 120 (incl. breakfast and all taxes)**Radisson Blu Hotel Leipzig********10**

The Radisson Blu Hotel Leipzig is situated opposite the famous Gewandhaus, opera house and concert hall and with its glazed frontage it is a futuristic contrast to the more traditional sights of the city's Old Town. The central station is only a few steps away while Leipzig Halle Airport (18 km) and the fair ground (8 km) are within easy reach. The 214 beautifully appointed guest rooms and suites are outfitted with high-class amenities such as LCD television screens and individual climate control. Free High-speed Internet access is available. Parking places are right behind the hotel.

Room Rates: SGL 159 / DBL 187 (incl. breakfast and all taxes)**Ramada Hotel Leipzig City Centre********11**

High above the rooftops of Leipzig and within walking distance to the historical and cultural Leipzig city centre, the RAMADA Hotel Leipzig City Centre opened on September 1st, 2010. The hotel is located on the seventh and eighth floor of Gutenberggalerie and provides 122 comfortably furnished rooms which are all air-conditioned. Each room is equipped with a desk, a flat screen TV set with cable television, a laptop safe electrically connected, a bath tub with integrated shower and a hairdryer. More than 350 parking lots are available in the underground garage. The vibrant city centre of Leipzig is accessible within only ten minutes by foot or three tram stops.

Room Rates: SGL 100 / DBL 126 (incl. breakfast and all taxes)**Ramada Hotel Leipzig********12**

The 4-star hotel is located in the vicinity of the city centre (6 km) and the trade fair ground (12 km). The hotel offers 291 comfortable rooms equipped with air-conditioning, cable TV, mini-bar and hair dryer. Relax and have a rest in the wellness area featuring a sauna, steam bath, whirlpool and solarium. Right next to the hotel you find the Sachsenthermie Spa - Saxony's biggest adventure pool where hotel guests receive reduced admission. There are 190 parking places available directly in front of the hotel.

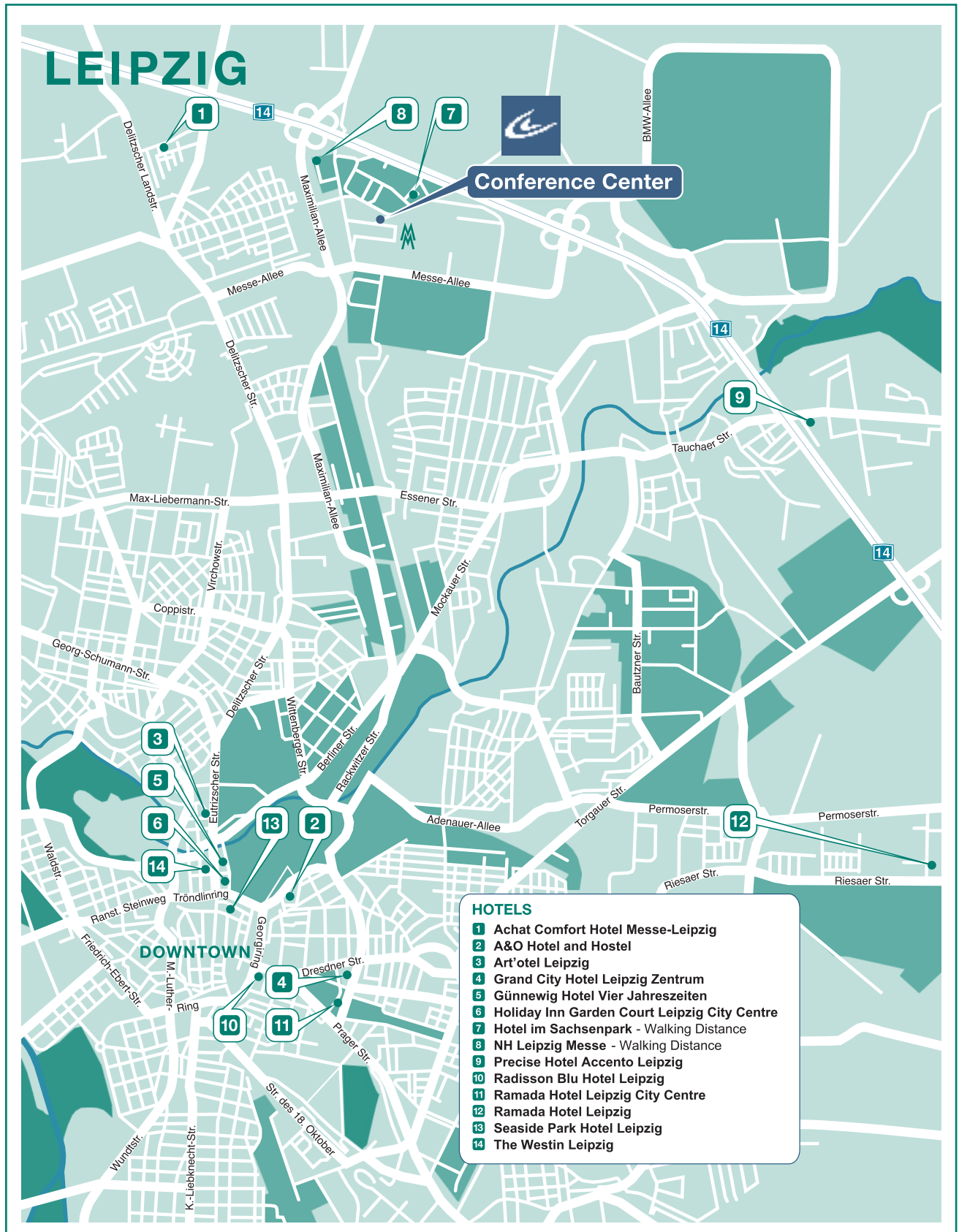
Room Rates: SGL 100 / DBL 115 (incl. breakfast and all taxes)**Seaside Park Hotel Leipzig********13**

This magnificent structure, first opened in Leipzig in 1913 as the Grand Hotel, is one of the city's oldest and most venerable hotels. In 1995, the Seaside Group opened its new 4-star, top-class hotel behind this splendid art nouveau facade. The 288 rooms with french bed are equipped with telephone, minibar, colour TV, desk, room safe, WLAN, security lock system, soundproof windows and individually adjustable heating. Art deco bathrooms with bathtub or shower, blow dryer and a separate toilet are standard in each room. A special feature of the hotel is the elegant "STEAKTRAIN" restaurant constructed as a replica of a famous train.

Room Rates: SGL 128 / DBL 146 (incl. breakfast and all taxes)**The Westin Leipzig*********14**

The Westin hotel enjoys a convenient setting, only 300 m from the city centre. The fair ground is about 8 km away. Set up elegant and modern, the 436 guest rooms offer a comfortable place of silence in the Leipzig city centre. All rooms possess marmoreal bath rooms, minibar, telephone with voicemail, hair dryer, pay- and satellite TV. Furthermore, the hotel offers a modern high speed internet access in every room. From the new Falco gourmet restaurant (2 Michelin stars) which is located on the 27th floor, you can admire the wonderful panorama of the city.

Room Rates: SGL 165 / DBL 185 (incl. breakfast and all taxes)



Let's discover the treasures of Leipzig

Tours can be booked through the official ESMRMB hotel and tour booking website www.esmrmmb2011.org.

City tours Leipzig

(Duration: 1-2,5 hours)

Book your individual city tour of Leipzig at www.leipzig-erleben.com

Enjoy one of the numerous daily walking or bus tours with modern coaches, nostalgic buses and double deck coaches. A daily city tour in both German and English, beginning at the Tourist Information in the city centre, is also available.

Check the dates and offers at www.leipzig-erleben.com



Day trip

Excursion to Dresden (8 hours)

The capital of the province of Saxony is well known as "Baroque Pearl on the river Elbe" and offers a great variety of different sights. For example the Zwinger, the Semper Opera and the Frauenkirche. After a guided city tour you will visit one of the world's famous museums: the Old Masters Picture Gallery with great masterpieces of key importance for the history of art like Raphael's "Sistine Madonna" or Giotto's "Sleeping Venus". It will be a guided day trip, but you also have time to discover the city on your own.

Price:

67 per person (minimum participant no. = 30 persons)

75 per person (minimum participant no. = 20 persons)

incl. English-speaking tour guide, private coach, city tour Dresden, lunch (2-course-meal excl. beverages), entrance fee + guided visit of Old Masters Picture Gallery



Half day excursions

1. Excursion to Halle (5-6 hours)

Explore the 1,200 year town history of Halle during a guided city walk. Your guide will tell you a lot of interesting facts, anecdotes and legends while visiting the impressive buildings and historical sights of the city centre. Since 806 the early medieval salt location has grown over the centuries to become a unique cultural point of interest. Discover the museum in Georg Friedrich Händel's house of birth, and gaze in amazement in the Market Church at Martin Luther's death mask. See the Händel monument on the market and the cathedral, Händel's first domain. Later on you will visit the Halloren Schokoladenfabrik, the oldest producing chocolate factory in Germany. There you can learn about chocolate production and about the history of this sweet tradition. Of course you should not miss a sample of the sweet specialities!



Price:

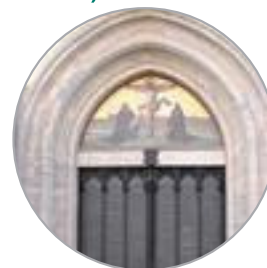
41 per person (minimum participant no. = 30 persons)

48 per person (minimum participant no. = 20 persons)

incl. English-speaking tour guide, private coach, city tour Halle, entrance fee for Händel museum + Market Church, guided visit of Halloren Schokoladenfabrik

2. Excursion to Wittenberg (5-6 hours)

A scenic route through the "Dübener Heide" leads you to Wittenberg, a city world famous for Luther. Discovering the important development in world history - the Reformation - you will follow the footsteps of Luther and his contemporaries. You will see the famous church door, where Martin Luther tacked up his theses, his homes and his parish church.



Price:

40 per person (minimum participant no. = 30 persons)

47 per person (minimum participant no. = 20 persons)

incl. English-speaking tour guide, private coach, city tour Wittenberg, entrance fee for Castle Church, City Church, guided tour of Luther House and Museum

More **day trips** are available to the beautiful cities: **Meissen, Weimar and Naumburg & Freyburg**

For further information, please visit the ESMRMB Congress 2011 - Hotel & Tour booking website at www.esmrmmb2011.org.

Join the European Forum for MR Research and Clinical Practice

ESMRMB Membership Types

24

Regular Member

140

Benefits: Journal (online and print), reduced fees for annual scientific meetings and educational activities of ESMRMB (provided payment deadlines are observed), access to the online membership directory and Society minutes and documents.

For information and membership application, please visit www.esmrmb.org or contact the ESMRMB Office.

Student Member

70

Criteria: Student membership is limited to 6 years following the date of the diploma (bachelor, masters, medical degree). A copy of the diploma (bachelor, masters, medical degree) has to be uploaded during online application or sent to the ESMRMB Office no later than 10 days after membership application in order to validate the membership. Please note that this does not apply for PhD degrees.

Benefits: Journal (online and print), currently free access to the annual scientific meeting and reduced registration fees for the educational activities of ESMRMB (provided registration/payment deadlines are observed), access to the online membership directory and Society minutes and documents.

Student Member

10

Criteria: Student membership is limited to 6 years following the date of the diploma (bachelor, masters, medical degree). A copy of the diploma (bachelor, masters, medical degree) has to be uploaded during online application or sent to the ESMRMB Office no later than 10 days after membership application in order to validate the membership. Please note that this does not apply for PhD degrees.

Benefits: online Journal, currently free access to the annual scientific meeting and reduced registration fees for the educational activities of ESMRMB (provided registration/payment deadlines are observed), access to the online membership directory and Society minutes and documents.

Associate Member

10

Criteria: Applicant needs to be member of a national society which is affiliated member of ESMRMB.

Benefits: online Journal, information on Society news

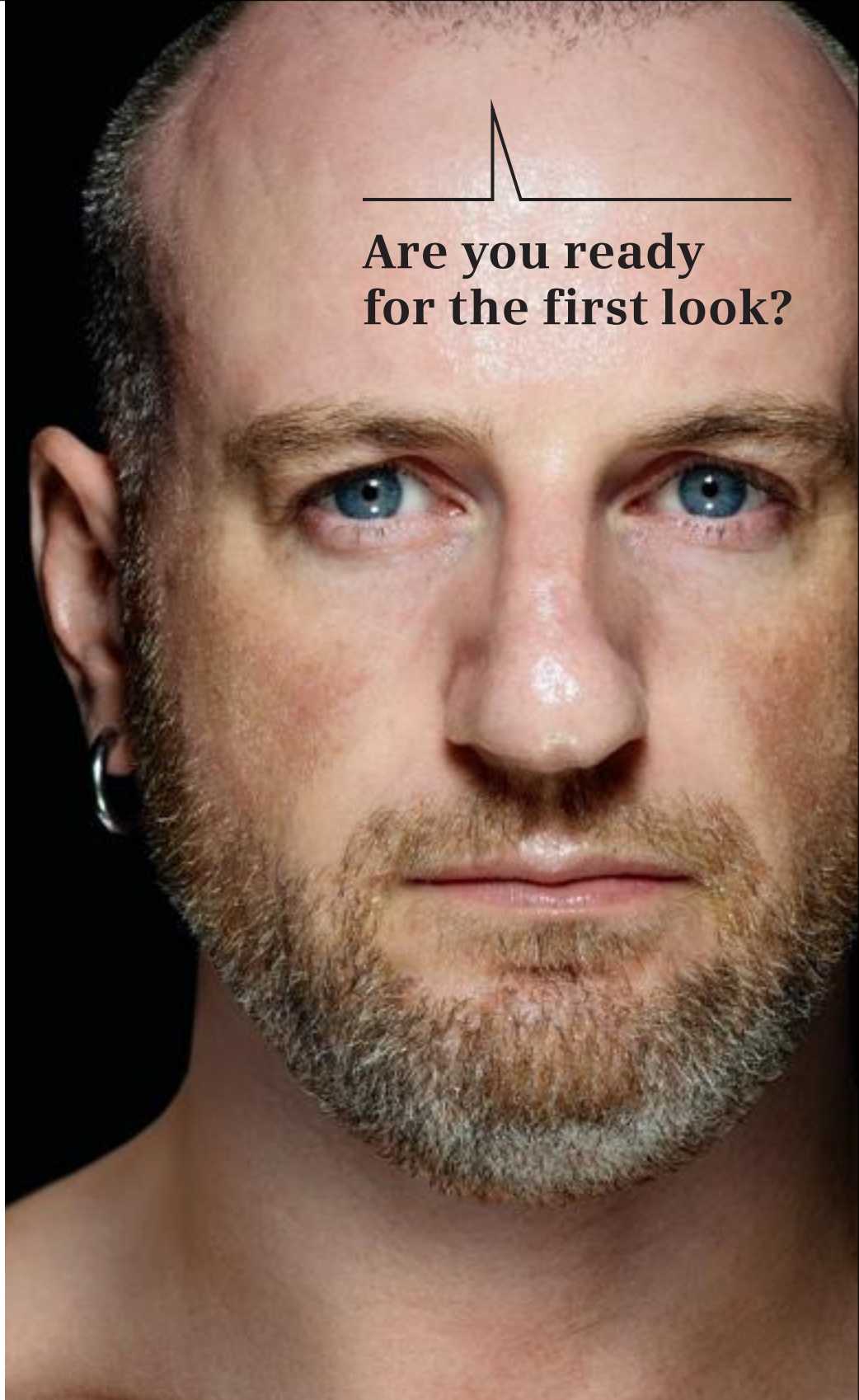
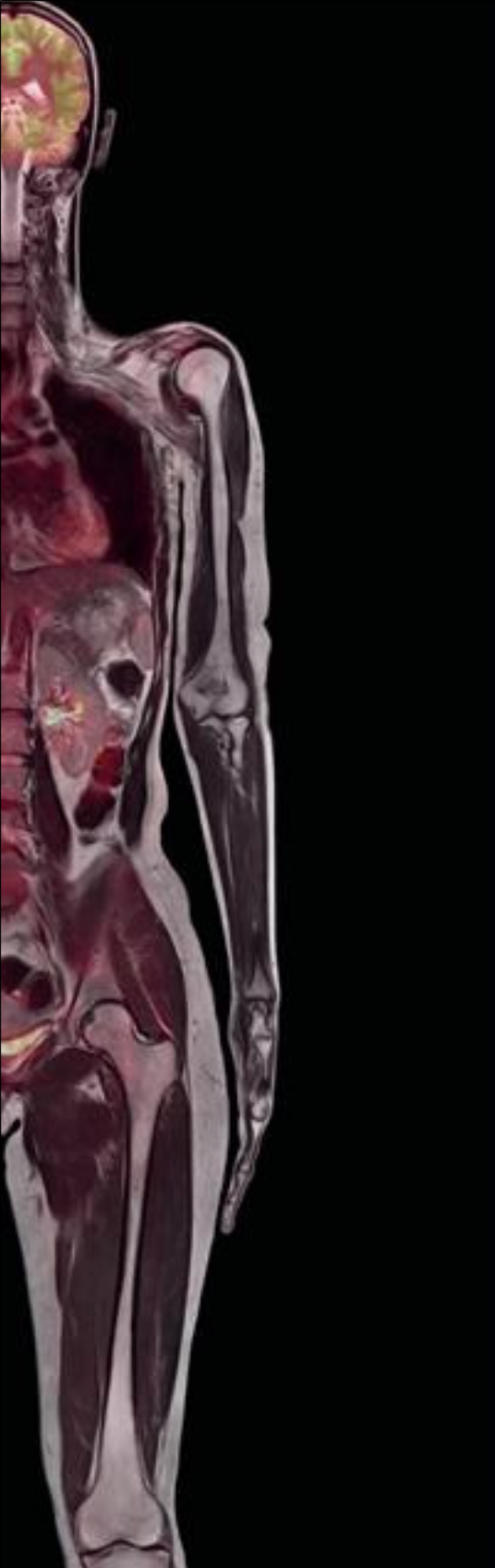
Free Associate Member

FREE!

Criteria: Applicant needs to be member of a national society which is affiliated member of ESMRMB.

Benefits: information on Society news

ESMRMB Office, Neutorgasse 9/2a, 1010 Vienna, Austria
Phone: (+43) 1 535 13 06, Fax: (+43) 1 535 70 41
office@esmrmb.org



Are you ready
for the first look?

Simultaneous, whole-body molecular MR is here.

For the first time, state-of-the-art 3T MRI and cutting-edge molecular imaging are fully integrated in a single scanner. Biograph mMR. Only Siemens can bring you this groundbreaking system, redefining the way you visualize, diagnose, treat and manage disease. With the potential of breathtakingly accurate images that open up new avenues of research and enable extraordinary clinical applications. To expand the understanding of life. And profoundly impact the way healthcare is delivered. What will you do first? www.siemens.com/mMR

Answers for life.

SIEMENS

Experience MR in a new light.

Sometimes something as simple as a light, such as the sophisticated LED lighting on the new Discovery[®] MR750w and Optima[®] MR450w, can be enough to get people's attention. This small, but important element represents our focus on patient-centric design in MR. See how redesigned table ergonomics, flexible coils and feet-first imaging for all anatomies can help provide the comfort your patients deserve and the diagnostic insight you demand.

Want to learn more?

Contact your GE sales representative for information on this revolutionary new system.

Discovery MR750w 3.0T

Optima MR450w 1.5T



GE imagination at work